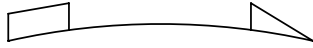


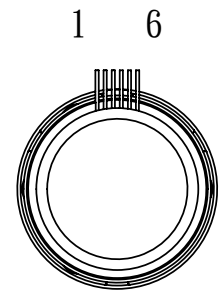
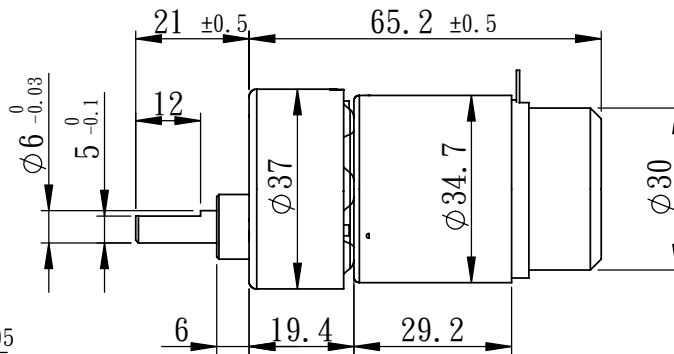
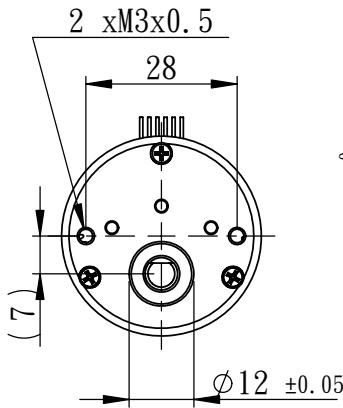
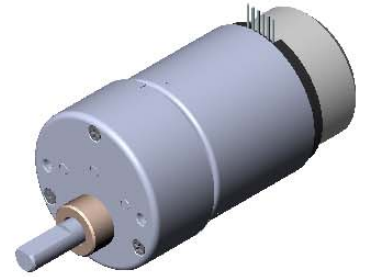
# SPECIFICATION

# HG37D670WE12\_052

## DIRECTION OF ROTATION



1	BLACK	Motor -
2	RED	Motor +
3	BROWN	Ground
4	BLUE	Channel B
5	WHITE	Channel A
6	GREEN	Sensor Voltage+



(unit:mm)

### A. Operating condition

1	Operating Voltage Range	3~7.2	V DC	4	Operating Temperature	-10~+60	°C
2	Rated Voltage	7.2	V DC	5	Storage Temperature	-30~+85	°C
3	Nominal Voltage	7.2	V DC	6	Rated Load	2.0	kgf-cm

### B. Electrical Characteristics

1	No-load Current	0.45	A (MAX.)	6	Stall Current	7.4	A (MAX.)
2	No-load Speed	132±15	rpm	7	Insulation Resistance(500V)	20	MΩ (MIN.)
3	Rated-load Current	1.3	A (MAX.)	8	Dielectric Strength	250	AC V
4	Rated-load Speed	108±12	rpm	9	Motor Type	Carbon Brush	~
5	Stall Torque	6.5	kgf-cm(MIN.)				

### C. Mechanical Characteristics

1	Gear Type	Spur	~	7	Output shaft Radial Load	3	kgf(MAX.)
2	Gear Ratio	1/52	~	8	Output shaft Run-out	0.05	mm(MAX.)
3	Gear Material	Metal	~	9	Shaft End play	0.5	mm(MAX.)
4	Rated Tolerance Torque	6	kgf-cm(MAX.)	10	Bearing Type	Sleeve	~
5	Momentary Tolerance Torque	18	kgf-cm	11	Weight	185±10	grams
6	Output shaft Axial Load	2.5	kgf(MAX.)				